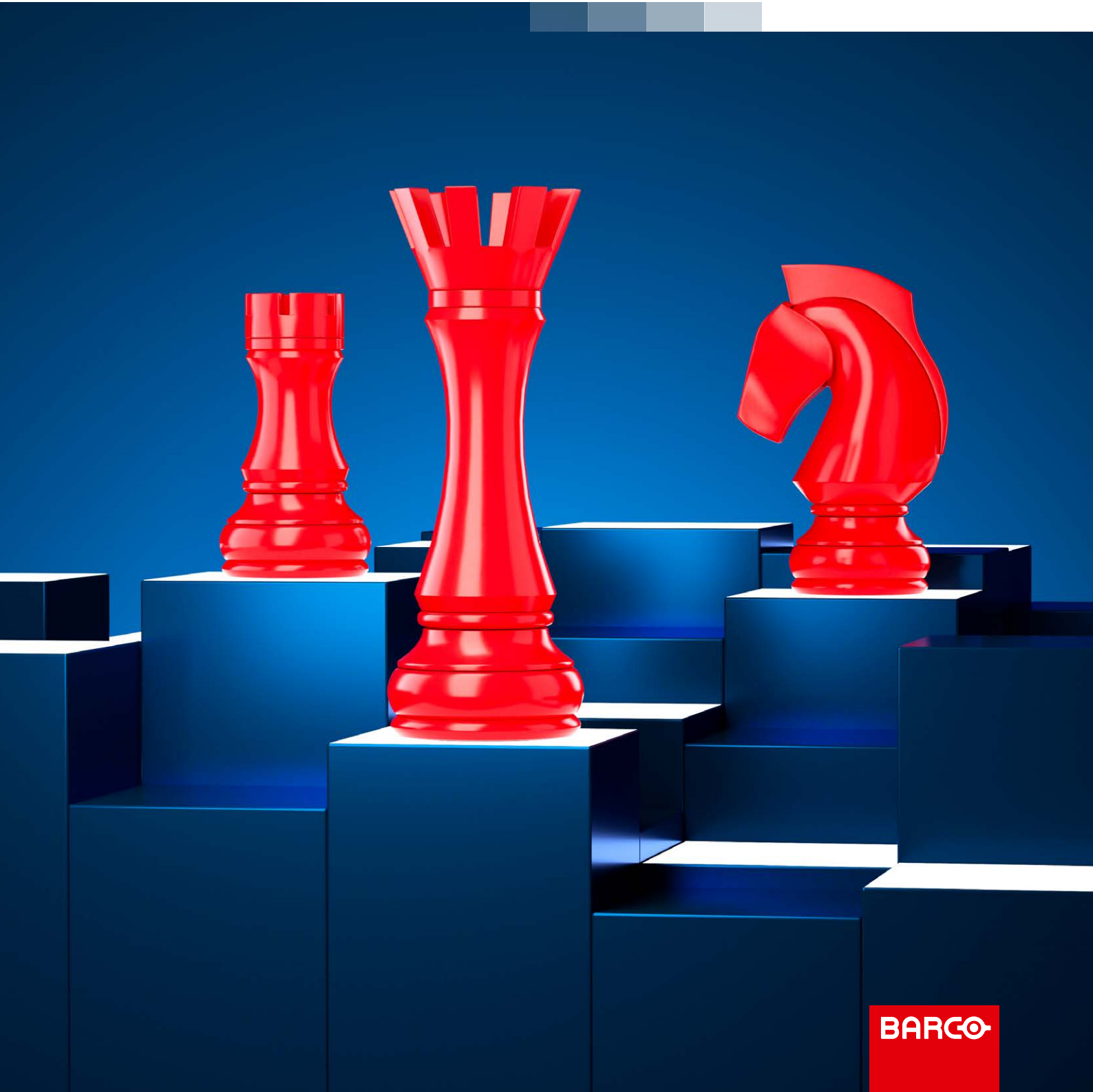


The smart move for your LED video wall experience

Barco TruePix



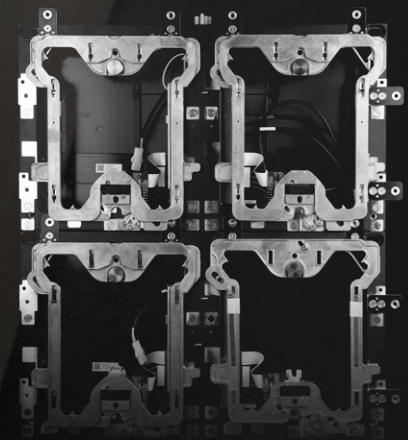
Stunning viewing experiences, deployed by smart engineering

Great images, that allow you to boost your efficiency and boast your content. That's what you expect from an LED video wall. With TruePix, Barco takes this experience to another level. We've reviewed and optimized the whole solution. After all, a stunning image is only as good as the technology it runs on.

But an optimal visual experience requires more than only a top-notch LED wall. A perfect installation and ensured rock-solid performance are equally vital. That is why Barco TruePix comes with a revolutionary mechanical concept that automatically aligns, absorbs imperfections of the infrastructure and ensures a predictable installation process.

Auto-balancing structure, for a guaranteed smooth-looking wall

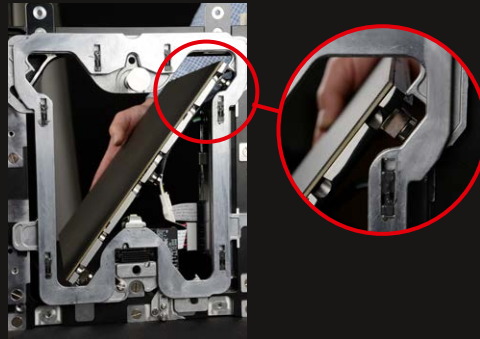
Does the wall you have foreseen for your video wall look perfectly flat? Think again! Not a single wall is perfect, and due to uneven surfaces, an LED install can't be done flawlessly. To solve all this, Barco created a revolutionary mounting structure that neutralizes imperfections of the underlying surface by using the force of gravity and the communicating vessels principle.



Flexible as a Knight

You'll have your LED wall up and running in no-time thanks to our smart engineering system. All TruePix LED modules are designed for seamless installation: contactless, risk-free and without the need for afterwork. Which means you won't have to rely on your colleague's eye to help out with adjustments.





0.9

1.2

1.5

1.9



Guided LED module placement

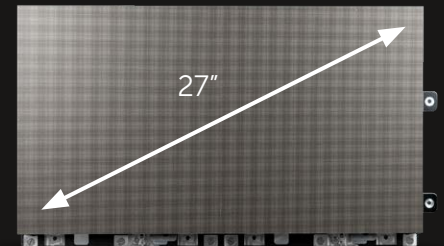
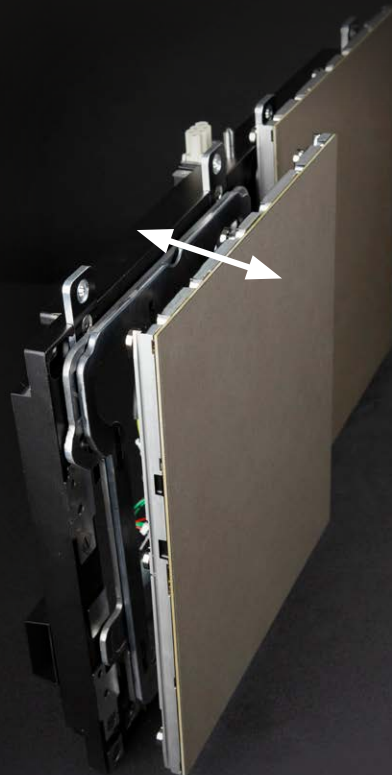
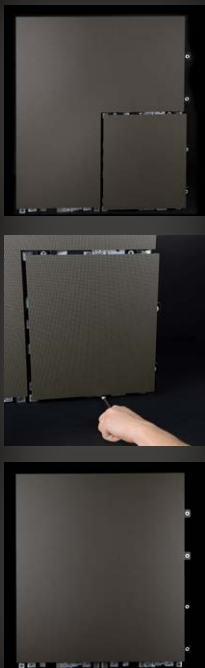
Design fully de-risks servicing

Pick your size.

Installing an LED video wall is quite challenging. There is a risk to damage the LED modules during installation, but also the time required is unpredictable because the wall generally needs some tweaking afterwards. Over 80% of LED installations globally are impacted by damages. The guided module placement of TruePix ensures truly seamless and risk-free installation. The shift insertion method makes sure that no LED damages occur, because the individual LEDs never risk of bumping into each other. For the finest pixel pitches, this procedure is camera-supported.

The smart engineering not only perfects installation, but also eases servicing. Module replacement is done in an elegant way: a motor is activated which pushes the module out in a parallel way, allowing easy removal of the module. When the module needs to be removed from the back, a sliding mechanism is foreseen to make it just as simple.

The smartly engineered TruePix tiles have a screen diameter of 27", with an aspect ratio of 16:9. This means it has been designed for commonly used resolutions (such as Full HD, 4K UHD, etc.). Pixel pitches range from 0.9 to 1.9 mm, allowing you to pick the right product for your need, application or environment. You can even choose between setting your wall in a standard or curved configuration.

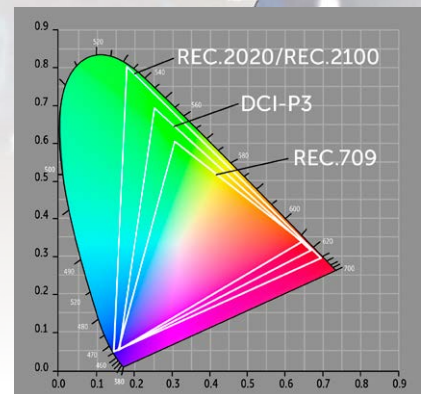


Bring content to life

A stunning visual experience, a shared operational picture that shows every detail, or an eye-catching large canvas that empowers your brand: a LED video is an extremely versatile display with a high return on investment. TruePix adds a new level to image quality, bringing all benefits of LED visualization to any environment. Bright, dimly lit or with varying brightness levels: TruePix feels perfectly at home in any setting.

Colors you can trust

There's a whole rainbow between black and white... so let your true colors shine as intended. Combining Barco's proprietary smart calibration method for wide color gamut support with Barco's full color balancing control solution ensures an exquisite image quality.



Powerful as a Queen

There's a whole rainbow between black and white ... so let your true colors shine as intended. TruePix LED walls run on our proprietary processing platform Infinipix® Gen2, which ensures color accuracy and contrast at any brightness. What's more, you'll keep a flawless image at all times thanks to the system's low latency and automatic calibration.

INP-100 Infinipix® Gen2



An unmatched experience in any environment

The next generation of the Infinipix® image processing is the brain of TruePix. This unique system ensures an unmatched viewing experience for all types of content with no visual distortions, low latency, perfect sync and no tearing. Infinipix® Gen2 also guarantees dimming without any loss in color intensity, which drastically expands the effectiveness of a TruePix installation. When people are expected to watch the wall intensely for a long time, for example in control rooms, eye fatigue can be a main issue. That is why Steadyview, a unique barco feature eliminates patterns on the wall, which cause eye fatigue. This is especially important in control rooms, where the staff stares at the wall for multiple hours on end.



Many shades of black and white

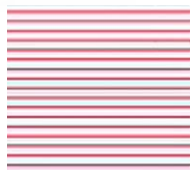
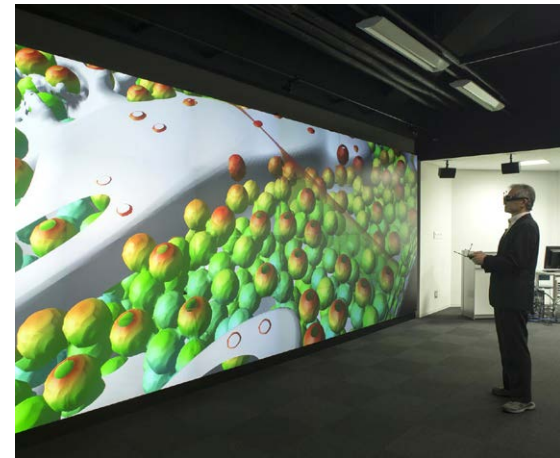
Unlike a chessboard, not everything is simply black and white. There are a lot of nuances in the edges of the spectrum, and showing these is what brings content to life – and defines for an important part the image quality of the video wall. Especially in low brightness mode details can get lost, which can for example lead to wrong decision-making in control rooms or poor images in television studios. With 23-bit internal processing, Barco supports the full dynamic range of the images.



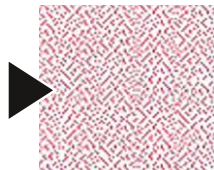
TruePix details Loss of shadow details

Showing all dimensions

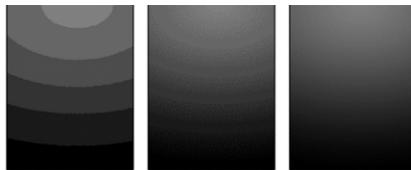
Fully supporting 3D, TruePix can also be integrated into VR systems. Combining the stunning LED visuals with 3D technology results in an unsurpassed viewing experience for both research and entertainment applications.



Interlacing can cause eye-fatigue



Barco's Infinipix® Gen2 reduces eye-fatigue



8-bit 16-bit 23-bit

Rock-solid performance at any time

Once you have experienced the great benefits of a TruePix video wall, you will want to use it at any time. Literally, that is. We know our video wall is a critical asset of your organization, and needs to be available 24/7. That is why we take all possible measures to assure uptime. And next to the rock-solid performance, we offer a long and extensive services portfolio and cloud connectivity features that further maximize the uptime. The result? Ultimate peace of mind for you and your team.

4-way inter-tile connectivity

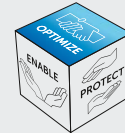


24/7 reliability

In any environment things can go wrong. And a system is only as solid as its most vulnerable component. To ensure uptime, Barco foresees redundancy of a number of critical components. 4-way inter-tile communication and signal loop redundancy are embedded, to guarantee an uninterrupted data flow. To complement this, you can choose redundant processors and power supplies. These measures account for TruePix' rock-solid performance.



EssentialCare



SmartCare

10 years peace of mind with EssentialCare and SmartCare

A video wall is an investment for the long haul. That is why Barco offers 10 years of services, with full availability of batch-compatible spare parts. To ensure fast resolution of the system in case of an issue, we have spare modules on site, priority helpdesk support and express shipment for all spare parts.

Solid as a Rook

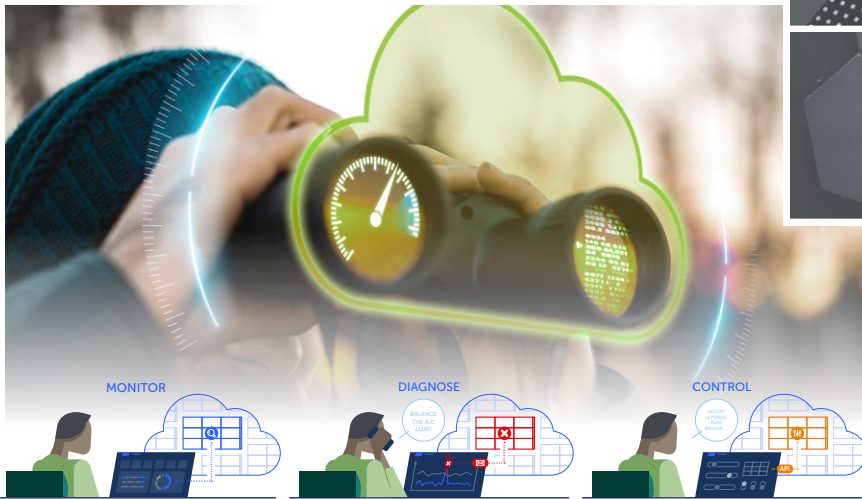
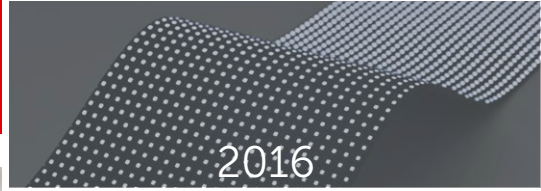
You want everything running smoothly, 24/7. We've got a whole system set up for that. With remote management and inter-tile communication, we're always one step ahead of any issues. If maintenance is needed, full back and front serviceability and motorized extraction ensure risk-free swaps. All with a limited footprint thanks to the EcoPower mode.



From the LED pioneers

Barco is a true pioneer in the business and a trusted brand with over 20 years of experience in LED solutions. We have accumulated industry-leading experience of all aspects of LED and know exactly what our customers require. Truly adhering to international certifications, correct and credible specifications, and transparent business ethics, Barco's reputation in LED is second to none and the quality of our products and services is exceptional. Due to our long legacy, we were able to build a solid network of regional partners at your service, and a full suite of solution eco system suppliers that allow an unsurpassed user experience.

When you think large visualization, think Barco!



The cloud-connected LED video wall

Monitoring the performance of the video wall is one of the most effective techniques to prevent downtime. Ideally, this is done from a central location, from where a managed service provider monitors a large fleet of video walls. With Barco's Video wall Management Suite, all vital parameters of the LED video wall can be viewed remotely. Depending on your subscription plan, additional diagnosing and controlling options can be unlocked – even allowing remote problem solving. This saves a lot of site visits – contributing to reduced costs.

Limiting power consumption

In order to optimize the power consumption of the LED video wall, Barco TruePix comes with an EcoPower standby mode, which reduces the power consumption with up to 95% compared to a full black screen - amounting to only 10W/m². This standby mode can be easily scheduled or can be activated when no communication, source signals or test patterns are active.



Watchful as a Bishop

With EssentialCare and SmartCare service packages, we offer you 10 years of dedicated service and priority support for your system. Enjoy fast resolution with fully batch compatible modules and manage your video wall from the cloud. A long-term strategy that'll have you come out the winner.

A solution for any environment

The flexibility of TruePix does not confine itself to a single market. With its magnificent images, perfectly seamless canvas and highest reliability, TruePix matches the visualization needs of many professionals, and is ideally suited to display compelling content in impressive corporate lobbies, mission critical control rooms, executive board rooms, experience centers, television studios and VR environments.

Corporate

You can make a trip to your office an engaging and impressive experience for both visitors and employees by introducing a TruePix LED wall. Whether it is in your corporate lobby, experience center, auditorium or boardroom, the accurate and vivid color representation will enable you to promote, prove, show and share, enabling enhanced internal collaboration and boosting the power of your brand.



Control rooms

TruePix offers the perfect Common Operational Picture (COP) for effective and fast decision-making, ensuring a fully accurate representation of all critical applications and processes. Just as important as the impeccable image quality, uninterrupted 24/7 operations and long-term supportability are implemented to support your operation, critical tasks and workflows. TruePix also considers ergonomics as a key requirement, with reduced eye-fatigue features, wide viewing angles and perfect brightness control for day/night operations.

Television studios

With TruePix, you and your team are always ready to start the perfect show. The amazing image quality displays your content as intended, making sure it stands out and harmonizes with studio lighting and camera settings, so no visual distortions or moiré effects are visible. Low latency content representation ensures perfect lip-sync, while multi-level failover guarantees uninterrupted time on air, resulting in an optimum live broadcast experience for your audience.



© 2022 Barco NV. All rights reserved. Reproduction in whole or in part without written permission is prohibited. All brand names and product names are trademarks, registered trademarks or tradenames of their respective holders. Due to continued innovation, information and technical specifications are subject to change without prior notice. Please check www.barco.com for the latest specifications.

M00958-R02-0822-PB Aug 2022

Barco nv | www.barco.com
Beneluxpark 21 | 8500 Kortrijk | Belgium
T +32 56 36 89 70 | F +32 56 36 83 86

ENABLING BRIGHT OUTCOMES

BARCO