

Wall Mount Rotation Adaptor

VFM-WRT EU SAP: 5432023

vav.link/vfm-wrt



Works with Vision's professional wall mounts

Adjustable stop point

Rotate clockwise or anti-clockwise

Fixes to wall or Vision's floor stands

Quality "slewing ring" bearing

Convert any of Vision's heavy-duty professional wall mounts or floor stands into rotating mounts with this high quality product. Use rotation to create unique audiovisual installations with visual impact, or rotate a touch screen to use it as a flip-chart portrait-style.



Slewing Ring

The quality bearing is a slewing ring type for smooth travel.

Compatibility

Works with these Vision mounts: VFM-W4X4 VFM-W4X4T VFM-W4X6 VFM-W6X4 VFM-W6X4T VFM-W8X6 VFM-W8X6T VFM-W10X6 VFM-F10 VFM-F30 (all variations) VFM-F40 (all variations)

Two-Part

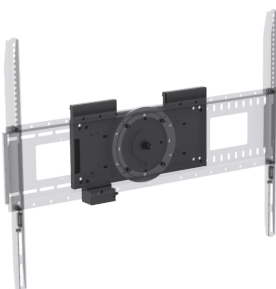
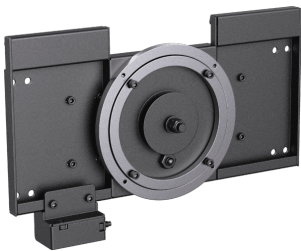
This product comes in two parts. One part fixes to the wall, or F30 or F40 floor stand. The other part fixes to the Vision wall mount.

Adjustable Stop

The stop can be fixed on the left or the right, and has fine adjustment screws to ensure the display is plumb.

Adjustable tension

Installers can fine-tune tension to make sure the display stops at the desired position.



VISION



VISION

MANUAL

Manual

EN PDF 193.22 KB

files.visionaudiovisual.com/products/VFM-WRT/manuals/VFM-WRT_manual.pdf

IMAGE

Product Images

ZIP 16.53 MB

<files.visionaudiovisual.com/products/VFM-WRT/images/VFM-WRT.zip>

SPECIFICATIONS

PRODUCT DIMENSIONS

See drawing

PACKAGED DIMENSIONS

490 x 240 x 70 mm / 19.3" x 9.4" x 2.8"

PRODUCT WEIGHT

5,5 kg (12.13 lbs)

PACKAGED WEIGHT

6,5 kg (14.33 lbs)

CONSTRUCTION MATERIAL

Cold-rolled Steel 3 mm (0.12")

SAFE WORKING LOAD

45 kg /99.21 lbs

COMPATIBILITY

Works with these Vision mounts: VFM-W4X4 VFM-W4X4T VFM-W4X6 VFM-W6X4 VFM-W6X4T VFM-W8X6 VFM-W8X6T VFM-W10X6 VFM-F30 (all variations) VFM-F40 (all variations)

COLOUR

Black

WARRANTY

Lifetime return-to-base

ORDER PART CODE

VFM-WRT [EU SAP: 5432023 / US SAP: tba]



VISION